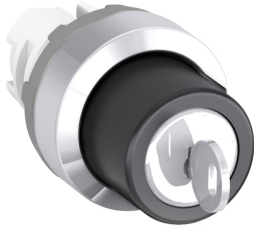




 PRODUCT-DETAILS

M2SSK1-304

M2SSK1-304 Selector Switch



General Information

Extended Product Type	M2SSK1-304
Product ID	1SFA611280R3004
EAN	7320500544174
Catalog Description	M2SSK1-304 Selector Switch
Long Description	<p>The M2SSK1-304 Selector Switch is: 2-position - Maintained/Momentary - Key - Black/Key - Non-illuminated - Chrome Metal - No contact block</p> <p>This Selector Switch is part of ABB's modular plastic range, the most versatile range with a high level of flexibility and market-leading electrical ratings. Engineered for total reliability, longer lifetime, and highest mechanical durability. Self-cleaning contacts ensure reliable operation without the need for maintenance, increasing uptime. A high degree of protection guarantees reliability in extreme environments. The innovative design simplifies the entire process, from selection to easy and quick, tool-free installation. The perfect solution for every application.</p>

Ordering

Minimum Order Quantity	25 piece
Customs Tariff Number	8536501999

Popular Downloads

Data Sheet, Technical Information	1SFC151007C02__
Instructions and Manuals	1SFC151011M0201

Dimensions

Product Net Width	0.03 m
Product Net Height	0.03 m
Product Net Depth / Length	0.063 m
Product Net Weight	0.054 kg

Technical

Ambient Air Temperature	Operation -25 ... +70 °C Storage -40 ... +85 °C
Color	Black/Key
Actuator Type	Key
Bezel Material	Chrome Metal
Illumination	Non-illuminated
Function	Maintained
Sub-Function	2-position
Maintained Positions	B, C
Key Removal Positions	Both Positions
Key Code	Different key code
Enclosure Type NEMA	Type1 Type12 Type3R Type4 Type4X
Mechanical Durability	0.5 million

Environmental

Degree of Protection	Front IP66
----------------------	------------

Material Compliance

Conflict Minerals Reporting Template (CMRT)	9AKK108467A5658
REACH Declaration	2CMT2022-006479
RoHS Information	2CMT2022-006498
RoHS Status	Following EU Directive 2011/65/EU and Amendment 2015/863 July 22, 2019
Toxic Substances Control Act - TSCA	2CMT2023-006523
WEEE B2C / B2B	Business To Business
WEEE Category	Product Not in WEEE Scope

Certificates and Declarations

cULus Certificate	9AKK107046A9925
Declaration of Conformity - CE	2CMT2015-005452
Declaration of Conformity - UKCA	2CMT2020-006121
DNV GL Certificate	E-14107

Container Information

Package Level 1 Units	bag 25 piece
Package Level 1 Width	0.165 m
Package Level 1 Depth / Length	0.25 m
Package Level 1 Height	0.2 m
Package Level 1 Gross Weight	1.43 kg
Package Level 1 EAN	7320500313350

Classifications

Object Classification Code	S
ETIM 6	EC000222 - Front element for selector switch
ETIM 7	EC000222 - Front element for selector switch
ETIM 8	EC000222 - Front element for selector switch
eClass	V11.0 : 27371213
UNSPSC	39122217
IDEA Granular Category Code (IGCC)	5215 >> Selector Switch Complete Assemblies

Categories

Low Voltage Products and Systems → Control Products → Pilot Devices → Modular Plastic Range → MSS Modular Selector Switches

